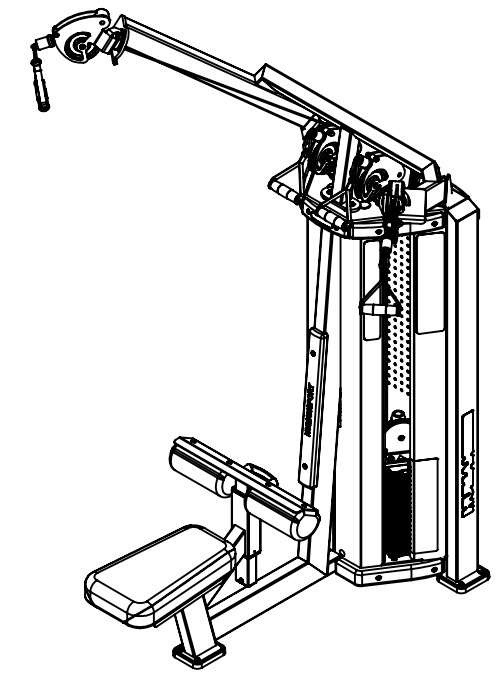
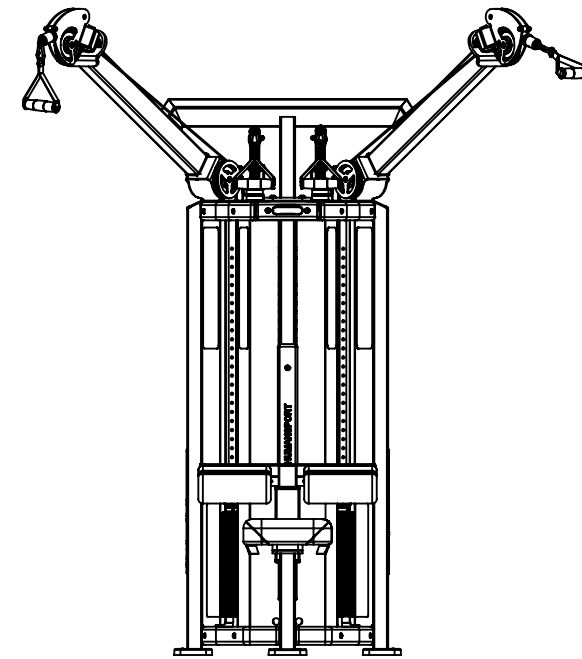
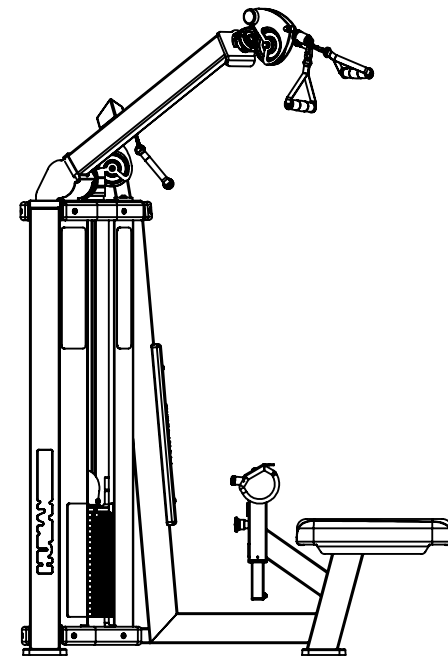
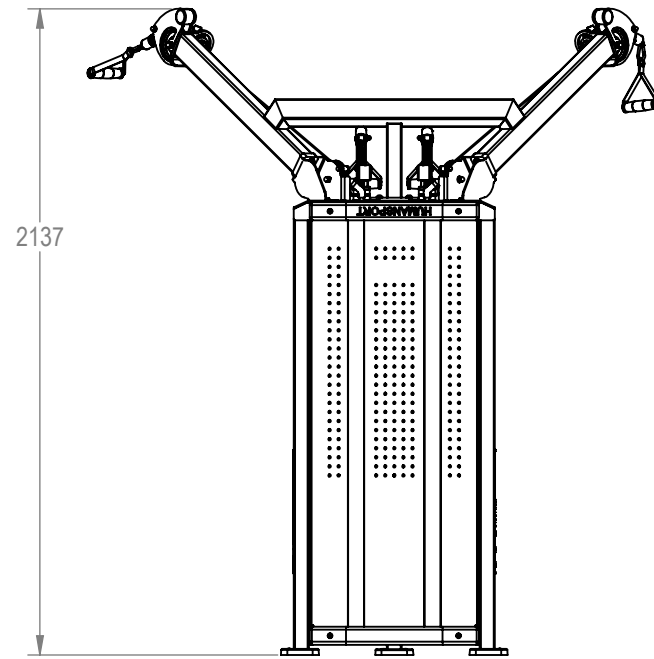
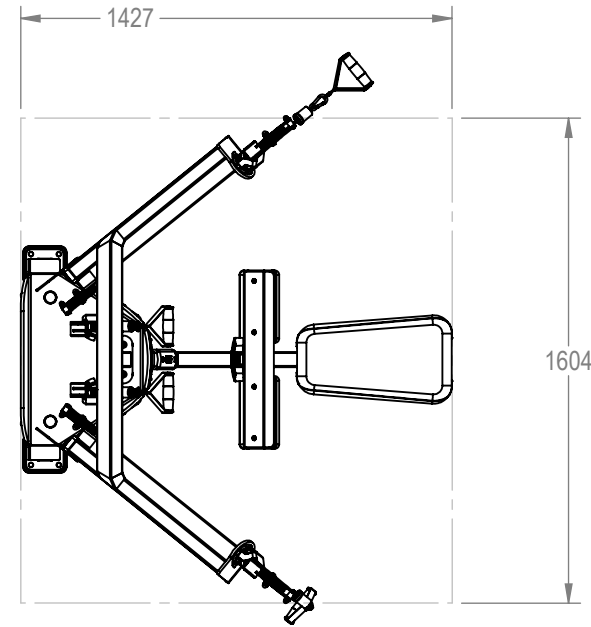


NOTES:

REVISION HISTORY				
REV	DATE	DESCRIPTION	ECO	BY
A	--	DOCUMENT RELEASE	--	--
B	8/29/2013	REDRAW BOM. CHANGE WEIGHT STACK TO LOCK N LOAD. CHANGE SHROUDS. CHANGE DFT STICKERS	14337	CRB



**DOCUMENT STATUS:
RELEASE**

NOTICE OF PROPRIETARY INFORMATION

THIS DOCUMENT SHALL NOT BE REPRODUCED NOR SHALL THE INFORMATION CONTAINED HEREIN BE USED BY OR DISCLOSED TO OTHER EXCEPT AS EXPRESSLY AUTHORIZED BY CORE HEALTH & FITNESS, LLC.

MATERIAL
SEE BOM

FINISH
SEE BOM

VENDOR:

THIRD ANGLE PROJECTION



DRAWN	INITIAL CRB	DATE 8/29/2013
CHECKED		
APPROVED		

CORE HEALTH & FITNESS, LLC
4400 NE 77th Ave., Suite 300
Vancouver, WA 98662

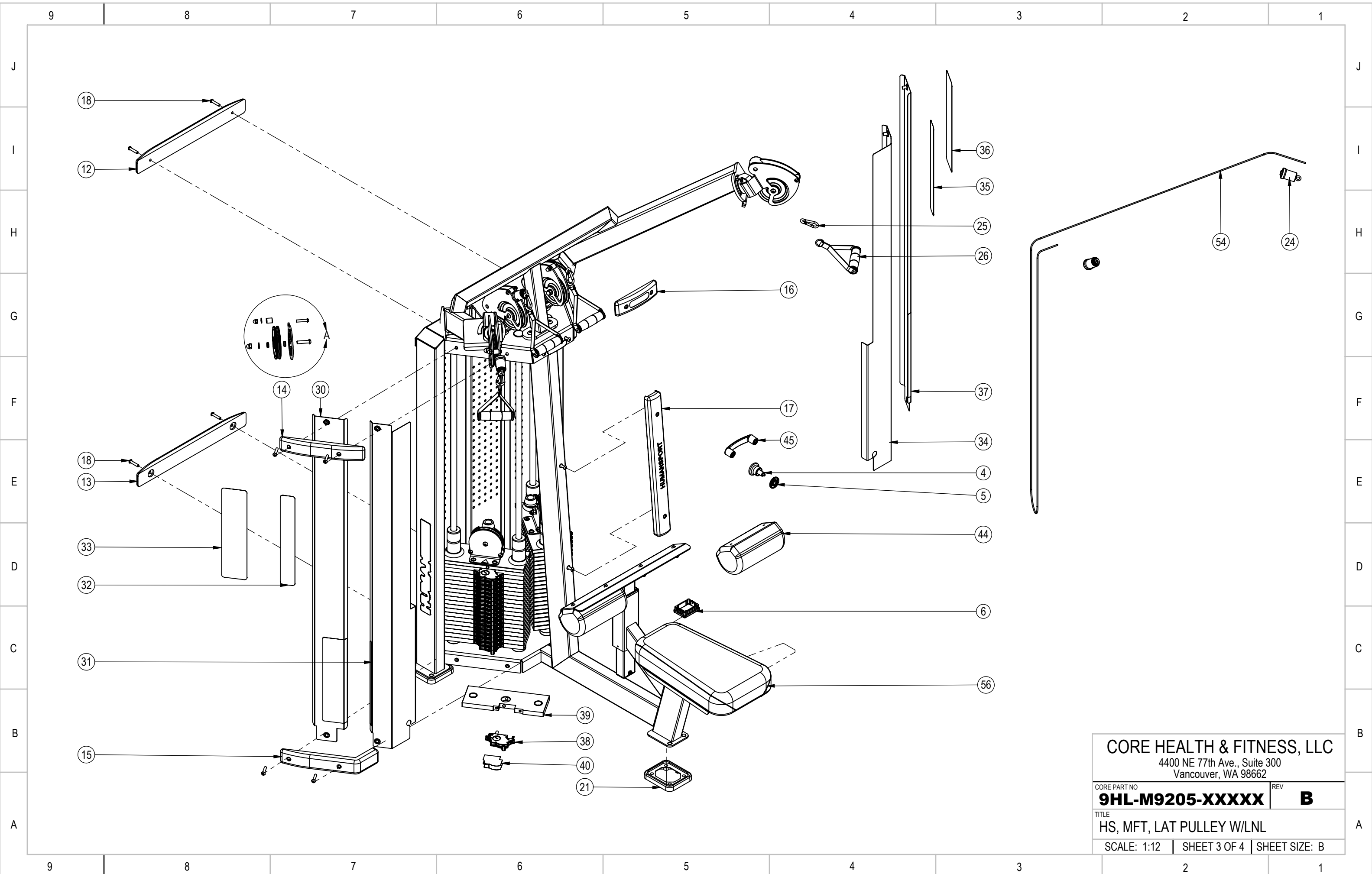
CORE PART NO. **9HL-M9205-XXXXX** REV **B**

TITLE
HS, MFT, LAT PULLEY W/LNL

SCALE: 1:25 | SHEET 1 OF 4 | SHEET SIZE: B

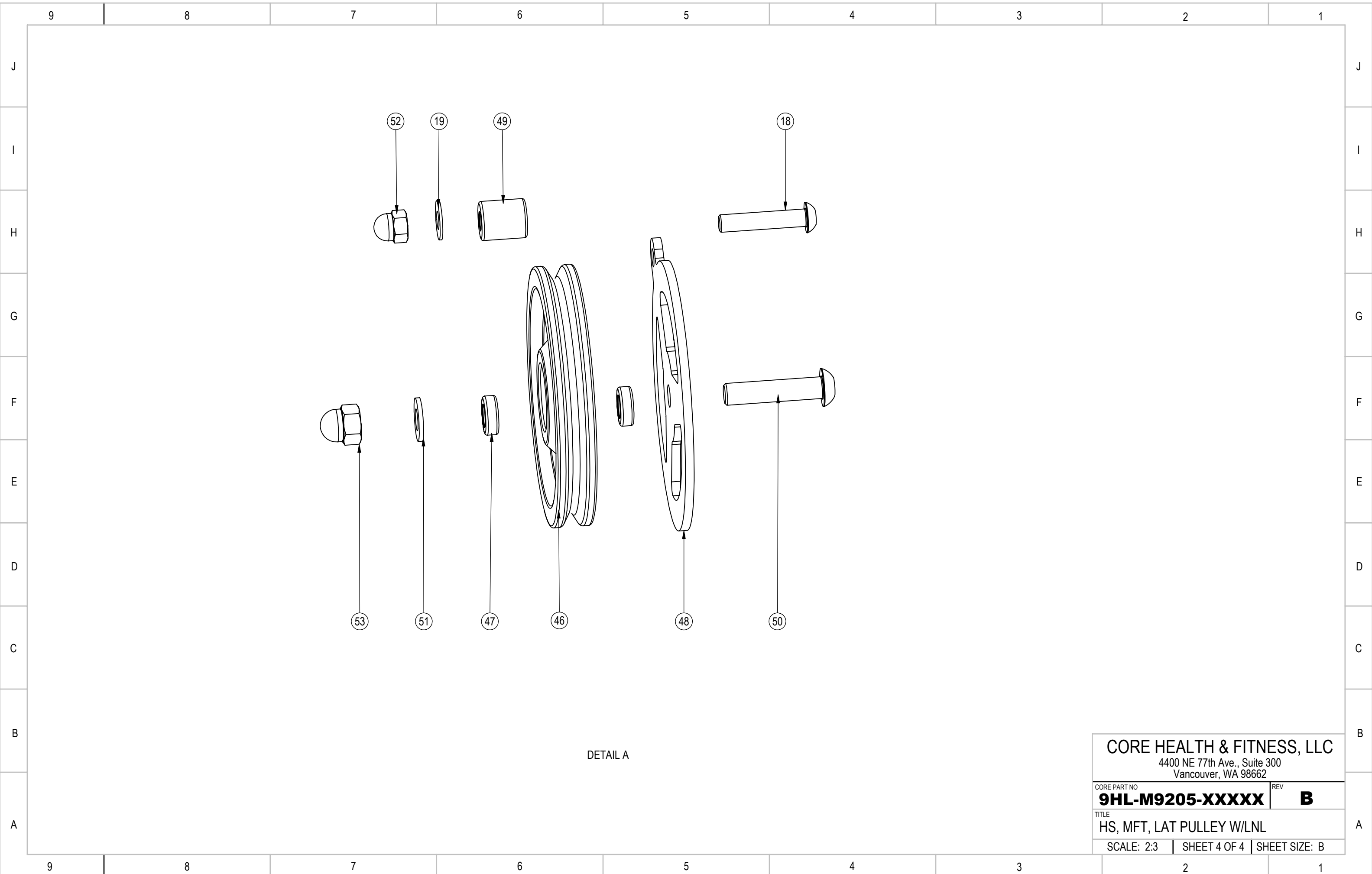
9	8	7	6	5	4	3	2	1	
ITEM NO.	PARTNO	DESCRIPTION		QTY.					
J	4	730-0128	PIN, ASSY, SEAT, ADJ., HS	1					J
	5	730-0134	COLLAR, POST ADJ., VIEW HOLE. HS	1					
	6	730-0135	SLEEVE, POST SHAFT, HS	2					
	7	730-2573	ASSY, BRACKET, PULLEY, HS, RH	1					
	8	730-2574	ASSY, BRACKET, PULLEY, HS, LH	1					
I	12	020-6986-X	TRIM, WOOD, TOP, BACK, HS	1					I
	13	020-6987-X	TRIM, WOOD, BOTTOM, BACK, HS	1					
	14	020-6983-X	TRIM, WOOD, UPPER, HS	2					
	15	020-6982-X	TRIM, WOOD, BOTTOM, HS	2					
	16	020-6985-X	TRIM, WOOD, TOP, CENTER, HS	1					
H	17	020-6984-X	TRIM, WOOD, CENTER, HS	1					H
	18	730-3030	BOLT, GENERAL, HUMAN SPORT	18					
	19	730-3043	WASHER, PULLEY BRACKET, HUMAN SPORT	4					
	21	020-6988	PAD, RUBBER, FEET, HS	3					
	24	730-0129	BEARING, ROTATING, CLAMP	4					
G	25	730-0143	CLIP, METAL, HS	4					G
	26	730-0126	GRIP, HANDLE, HS	4					
	27	050-2007	LABEL, HUMAN SPORT,41.1 X 5.0	2					
	29	050-2012	LABEL, PULL, HS	1					
	30	730-3025	SHROUD, RIGHT, OUTSIDE	1					
F	31	730-3036	SHROUD, INSIDE, LEFT, HS	1					F
	32	730-3058	STICKER, LEFT SHROUD, INSIDE, LAT PULLEY, HS	1					
	33	730-3057	STICKER, LEFT SHROUD, OUTSIDE, LAT PULLEY, HS	1					
	34	730-3037	SHROUD, INSIDE, RIGHT, HS	1					
E	35	730-3056	STICKER, RIGHT SHROUD, INSIDE, LAT PULLEY, HS	1					E
	36	730-3055	STICKER, RIGHT SHROUD, OUTSIDE, LAT PULLEY, HS	1					
	37	730-3022	SHROUD, OUTSIDE, LEFT, HUMAN SPORT	1					
	38	731-1423-KT	KIT,ASSY,SWITCH,LNL,STRAIGHT	38					
	39	731-0101	PLATE,WEIGHT,5Kg,18mm	38					
D	40	730-3029	STICKER, LOCKNLOAD, WEIGHT INCREMENT, HUMAN SPORT	2					D
	44	730-0136-X	PADS, SHIN,HS	2					
	45	730-0138	HANDLE, PLASTIC T-BAR, HS	1					
	46	730-0142	PULLEY, ASSY, HS	2					
	47	730-3035	SPACER, PULLEY BEARING, HUMAN SPORT	4					
C	48	730-3031	OUTER BRACKET, PULLEY, HUMAN SPORT	2					C
	49	730-3032	SPACER, PULLEY BRACKET, HUMAN SPORT	2					
	50	730-3020	PULLEY BOLT, HUMAN SPORT	2					
	51	120-3301	WASHER, M10	2					
B	52	730-3033	ACORN NUT, GENERAL, HUMAN SPORT	2					B
	53	730-3034	ACORN NUT, PULLEY BOLT, HUMAN SPORT	2					
	54	130-1751	CABLE, 6.5 METERS, HS	1					
	55	730-2832-XX	WELDMENT,SEAT,LPD,HS	1					
A	56	730-0382-X	PAD, BENCH, HS	1					A

CORE HEALTH & FITNESS, LLC	
4400 NE 77th Ave., Suite 300 Vancouver, WA 98662	
CORE PART NO	REV
9HL-M9205-XXXXX	B
TITLE	
HS, MFT, LAT PULLEY W/LNL	
SCALE: 1:25	SHEET 2 OF 4 SHEET SIZE: B



CORE HEALTH & FITNESS, LLC
 4400 NE 77th Ave., Suite 300
 Vancouver, WA 98662

CORE PART NO	REV
9HL-M9205-XXXXX	B
TITLE	
HS, MFT, LAT PULLEY W/LNL	
SCALE: 1:12	SHEET 3 OF 4 SHEET SIZE: B



DETAIL A

<p>CORE HEALTH & FITNESS, LLC 4400 NE 77th Ave., Suite 300 Vancouver, WA 98662</p>		
<p>CORE PART NO 9HL-M9205-XXXXX</p>	<p>REV B</p>	
<p>TITLE HS, MFT, LAT PULLEY W/LNL</p>		
<p>SCALE: 2:3</p>	<p>SHEET 4 OF 4</p>	<p>SHEET SIZE: B</p>